

What is Sustainable Urban Development?

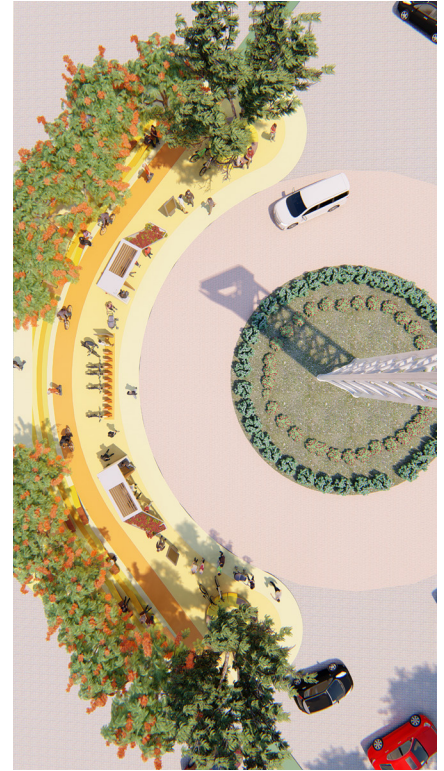
Sustainable urban development means integrated urban places designed to bring people, activities, buildings, and public spaces together, with easy walking and cycling connection between them and near-excellent transit service to the rest of the city. It means inclusive access for all to local and city-wide opportunities and resources by the most efficient and healthful combination of mobility modes, at the lowest financial and environmental cost, and with the highest resilience to disruptive events. Inclusive development is an essential foundation for long-term sustainability, equity, shared prosperity, and civil society in cities.



Public Squares



Recreational Spaces



Integrated Mobility Modes

Sustainable Urban Mobility

MASARAT MISR has stood for the rights of all to access opportunities, culture, services, and communities in and of their cities. To achieve this, cities must pursue a sustainable, equitable, and holistic approach to transport.

MASARAT MISR offers a wide range of services in the scope of sustainable urban mobility



Plan for sustainable mobility in the entire city



Define a long-term vision and a clear implementation plan



Cooperate across international boundaries



Develop all transport modes in an integrated manner



Involve citizens and stakeholders



Arrange for monitoring and evaluation



Access current and future Performance



Assure quality



Contact Us for more information

Website www.masarat-misr.com
Mail info@masarat-misr.com
Phone +2 (02) 26781496 , +2 (02) 26781335
LinkedIn <https://www.linkedin.com/company/masarat-misr/>
Facebook https://www.facebook.com/MasaratMisr/?ref=br_rs

To find more about Masarat Misr's offerings and Strategies Visit our Website Now!
www.Masarat-misr.com



Social Interactions



- Knowing Neighbors
- Sociability
- Trust
- Political Participation

WALK



Health

- ↑ Life Expectancy
- ↑ Mental Health & Happiness
- ↓ Obesity
- ↓ Risk of Various Illnesses

Economy



Walkable environments should be viewed as economic infrastructure that affect employment and should be invested accordingly “Paul Shaker”



Environment



Walking and cycling to school could save the city from at least 17 kg. of emissions per person per year.



20 Bikes can be parked in the same space as a car



Bikes are 50% Faster than cars during rush hours



Lives and money could be saved if citizens ran 1/2 their errands by bike rather than car for 4 months a year